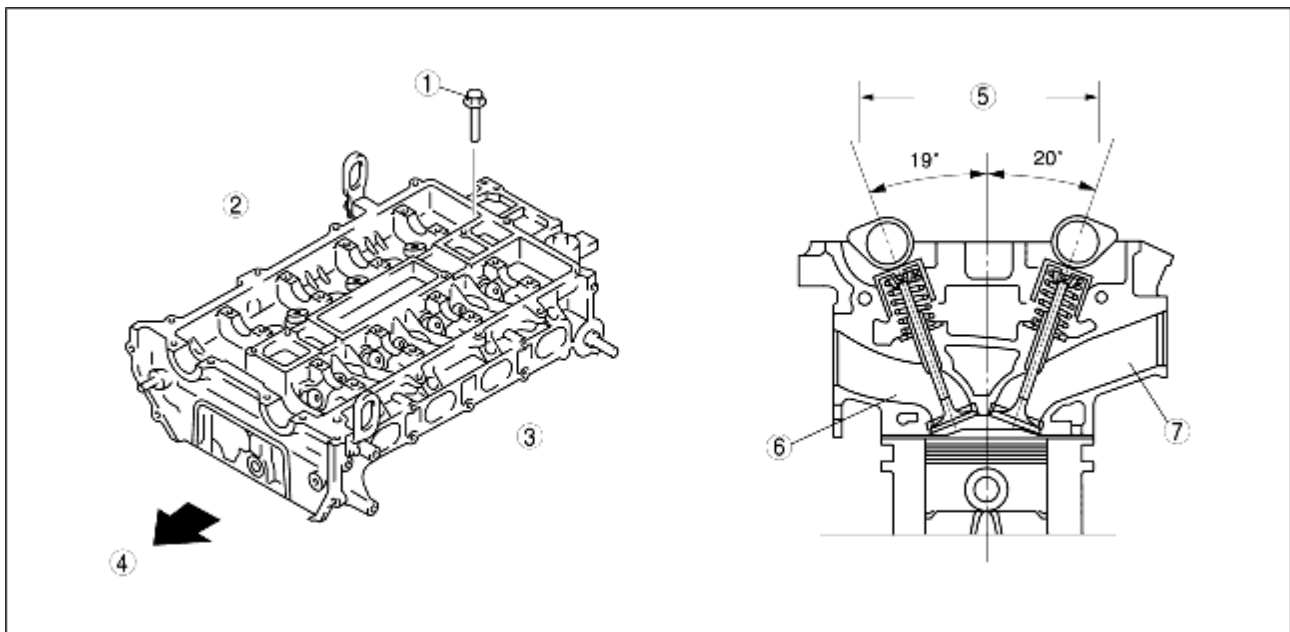


## CYLINDER HEAD CONSTRUCTION [LF]

B3E011010100T04

- The cylinder head is made of a high heat conductive, lightweight aluminium alloy, which is quenched.
- Compact, pentroof-type combustion chambers have been adopted. The spark plugs are mounted at the top of the combustion chambers to improve combustion efficiency.
- The intake/exhaust port layout is a cross flow type, (the angle between two valves is 39°, the two intake valves and the two exhaust valves per cylinder) which improves air intake/exhaust efficiency.
- The cylinder head bolts are plastic region tightening bolts to be tightened in five steps to insure tightening stability.



B3E01 10T060

1	Cylinder head bolt
2	Exhaust side
3	Intake side
4	Engine front side
5	Angle between two valves
6	Exhaust port
7	Intake port